

REACHING OUT

The Outreach Foundation Newsletter • Spring / Summer 2022

**Ukraine Appeal:
Faithful Partnerships
in Eastern Europe**

PAGE 2

**Grateful for
Faithful Donors**

PAGE 10

**The Light Shines
Again, in Mosul**

PAGE 4

**Madagascar Recovering
from Cyclone Destruction**

PAGE 12



Ukraine Appeal: Faithful Partnerships in Eastern Europe

As we continue to watch the war news coming out of Eastern Europe, we invite you to join The Outreach Foundation in prayer for those who are fighting against the invasion of their sovereign nation as well as those who are sheltering in place or fleeing to safe havens outside of their country. Our partners in and around Ukraine are doing faithful work to aid those who remain in Ukraine and the refugees who have fled.

In Lithuania, we partner with **City Church**, which is providing relief to refugees. They have established a hotel that is managed by Ukrainian refugees. They are organizing childcare and providing transportation for children to school and doctors, while also meeting advanced medical needs not covered by the government. They engage Ukrainians in weekly Bible studies, worship services, and nightly prayer meetings. They have also made several supply runs into and out of Ukraine.

In Poland, Outreach supports two groups. First is the **College of Theology and Social Sciences in Warsaw**. They have transformed classroom and office space into long-term apartments for Ukrainian families. They have established a counseling center that is meeting emotional and psychological needs. Their work meets basic physical needs and provides advanced medical care that is unavailable through the government.

Also in Poland, the **Eastern European Reformation Ministry** and **God's Light Church**, two congregations in Lublin about 90 minutes from the border of Ukraine, have come together with **The Bridge**, an American Church in Georgia. They make weekly humanitarian runs into Ukraine as well as provide physical and spiritual support to refugees in Lublin. With them, Outreach has provided funds to establish a new shelter that houses several families.

In Ukraine itself, we partner with four groups. First is the **Ukrainian Greek Catholic Church** in Lviv. This church is providing shelter, physical, and spiritual support to thousands of people from other parts of Ukraine. They are sending medical supplies throughout Ukraine, which they receive from our second partner, **Cru** in Romania. This partner receives our funds and purchases medical supplies, taking them by truck to Lviv. The church is working with a hospital to get medical supplies into Ukraine. From the hospital, these supplies go to various remote medical clinics, even in the east where most of the fighting has been.

A third partner is **Mission Eurasia**, which provides humanitarian relief and spiritual resources to thousands of people throughout Ukraine. Mission Eurasia is connected to seminaries and over 500 churches in Ukraine and even more in Belarus and Russia.



Displaced people in Western Ukraine stand in lines waiting for Mission Eurasia's "I-Care" boxes with food and spiritual resources.



Mission Eurasia visits bombed out villages to find people who have not been able to evacuate. This picture comes from near Kyiv.

Our fourth partner is **Radooga**. This ministry is based in Kyiv, but the women on staff have emigrated to Valencia, Spain. From there, 15 women are running an online Christian school that has been approved by the Ukrainian government. 11,000 students are attending this school. In Ukraine, Radooga is holding robotics camps for orphans and children from impoverished families. These camps are a breath of life to these children, as they learn computer programming skills and basic engineering that they otherwise would never be exposed to. This organization is committed to transforming culture in Christ's name, doing so in creative ways among the next generation.

We invite you to make a gift to the Ukraine Appeal in support of these ministries to strengthen their work being done in Christ's name.

Out of the Darkness, the Light Shines Again, in Mosul

Mosul. The name does not immediately conjure up frightening images for me as it does for most.

Yes, I am well aware of its recent history: of its gradual takeover by fundamentalists when the U.S.-led war in 2003 destabilized Iraq, of the subsequent terror wrought by ISIS upon Christians and moderate Muslims who had called it “home” and of the “battle for Mosul” which defeated ISIS *there* but decimated a large part of the historic Old City.

When I hear “Mosul,” I think of the Church in that place, specifically the *Presbyterian* Church there which I first visited in 1998, led on foot through a winding “rabbit warren” of streets too narrow for cars, to stand in front of an ornately carved doorway in a wall, with my eye drawn upwards to see, in a tear-shaped rondel, the words, in English, “The Protestant Church.” I would later learn that the Arabic writing inside noted its founding: 1840. Indeed, it was *the* Protestant church in Iraq – there was no other at that time. I would make several subsequent visits over the years.

Mosul Church visit 2019



In October 2019 an Outreach Foundation team journeyed back to Mosul with our Iraqi partners, cautiously and carefully led by Rev. Haitham Jazrawi of Kirkuk. We drove down the rubble-filled streets and past the pancaked buildings, where an occasional sign of life was seen in a few small shops that had reopened. We found the destruction inside the church compound to be extensive but not complete. Standing in a circle, we sang (quietly), prayed, and partook of the broken body and shed blood of our Lord. And we began a discernment process with our Iraqi Presbyterian family: should the Mosul Church be rebuilt? God's answer came through loud and clear: YES!

Thanks be to God, a different scene awaited us upon our return to that church on May 13, 2022, to worship in the now-restored sanctuary of the Presbyterian Church in Mosul! The Outreach Foundation is honored to have facilitated, with the partnership of generous donors, the physical renovation of the church, but it could only have happened because our Iraqi family there persevered, confident that their work and witness must continue in Mosul because of God's sure promise in I Kings 9:31, which is written over the communion table: "I have heard the prayer and plea you have made before me; I have consecrated this temple, which you have built, by putting my Name there forever. My eyes and my heart will always be there."

Please continue to support the work and witness of our Presbyterian family in Iraq.

Marilyn Borst
Associate Director for Partnership Development



Mosul Church visit 2022

GRATEFUL FOR OUR


National Presbyterian Church's Support for NESSL Refugee Schools in Lebanon

National Presbyterian Church (NPC) in Washington, DC, as a key part of its recent capital campaign, generously supported schools for Syrian refugee children in Lebanon run by the churches of the National Evangelical Synod of Syria and Lebanon (NESSL). This giving was part of a capital campaign, split between special mission partners, with the result that members' giving deepened both local and global partnership relationships and addressed some of the world's greatest needs while also building capacity for local outreach.

Syrian refugees are near and dear to NPC, which had sponsored a Syrian family for resettlement locally and sent three members on trips with The Outreach Foundation to visit NESSL and the refugee schools in Lebanon. These members sat in on classes and joined for "chapel" time with a Bible story and discussion, witnessing the fruitfulness of Lebanese church and school leaders and teachers, as well as hearing their vision and challenges. And there were challenges. The Syrian schools had closed during the war, and once the children were in Lebanon, they could not attend Lebanese schools. So many ten-year-olds had not yet learned to read. But it was not all work! The Outreach visitors joined the kids for lunch and the joy of dancing and singing together under the Lebanese sun.

The visitors returned to NPC to share videos and stories in worship and VBS, so the entire congregation also felt personally connected. During COVID time, the refugee schools were closed as so many around the world; even during this time, The Outreach Foundation helped keep the connection strong by providing regular updates and photos about the schools and the efforts of the churches in providing emergency help for the families.

Rev. Nancy Fox
Outreach Trustee

A photograph of the National Presbyterian Church building, a large, modern structure with a prominent central tower and a series of tall, narrow, arched windows. In the foreground, there is a large, circular fountain with several water jets. The scene is set outdoors with green trees and a clear blue sky.

National
Presbyterian

CHURCH PARTNERS

Woodside “Welcomes the Child”

“Open the eyes of my heart Lord, I want to see you.” That’s how Dove-award-winning Christian singer Paul Baloche and friends helped Woodside Presbyterian Church in Yardley, PA kick off their “Welcome the Child” Christmas offering. The special benefit concert not only opened the Advent season but also launched the congregation’s support for two missions in Zambia: the Bill and Bette Bryant Crisis Nursery and the Namumu Orphanage. Woodside started its partnership with Namumu in 2001 in response to an appeal from The Outreach Foundation.

As the people of Woodside prepared to welcome the Christ Child, they also desired to help these two vital missions welcome more children. The Bryant Nursery in Lusaka and the Namumu Center in Siavonga provide love, nurture, education, and the Gospel to orphaned and abandoned children. Through the weeks leading up to Christmas, the Lord opened the eyes and hearts of God’s people to the challenges children face in this south-central African nation. Woodside eventually raised \$10,000 for each mission. Pastor Doug Hoglund, a trustee of The Outreach Foundation, and members of the church plan to visit these and other partners in Zambia this fall. He says, “The more the Lord opens eyes and hearts to the amazing work of God’s people in Zambia, the more we will see Jesus.” For the Lord promises, “Whoever welcomes one such child in my name welcomes me.” Matthew 18:5.

Rev. Doug Hoglund
Outreach Trustee



Crisis Nursery

OUR GLOBAL PARTNERS



Covering Five Continents and Thirty-Seven Countries

Ukraine



Kenya

GRATEFUL FOR FAITHFUL DONORS

The Outreach Foundation was blessed in 2021 with another year of strong financial results. Increased generosity from donors and strong return on investments combined with lower expenses resulted in one of the best financial years Outreach has ever experienced! Our strong financial position allowed us to further invest in partners and projects around the world, especially those with the most urgent needs.

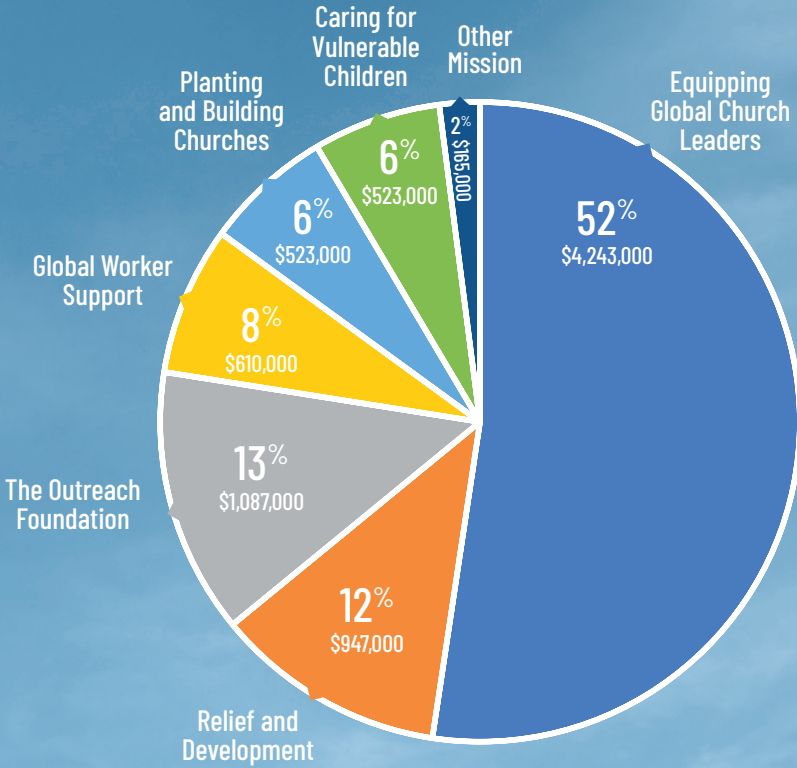
2021 saw an average giving increase from both churches and donors. We are thankful for the generous spirit of our donors! Highlights of our 2021 financials are presented in the newsletter, with more detailed financial returns available on our website.

We give thanks to Linda Patrick for her 26 years of dedicated service and leadership to The Outreach Foundation as Chief Financial Officer! In 2021, we welcomed Jenna Crunk as our new CFO.

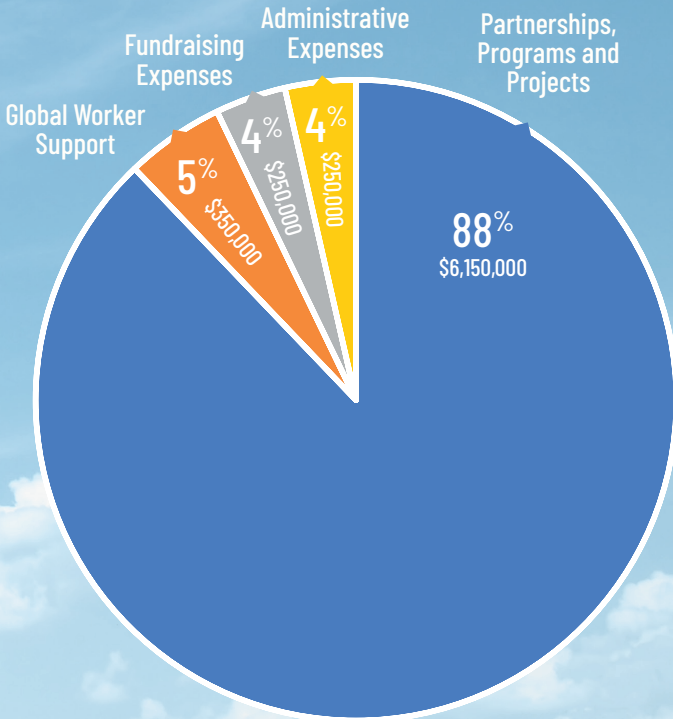
Despite the economic downturn in early 2022, projections for the upcoming year remain strong with continued growth and generosity from individuals and churches. We have witnessed unprecedented growth in new individual and church donors in response to the Ukraine Appeal.

We are grateful to all our donors and give thanks to the Lord from whom all blessings come.

2021 CONTRIBUTIONS – \$8,098,000



2021 DISTRIBUTIONS – \$7,000,000



Madagascar Recovering from Cyclone Destruction

Madagascar suffered massive destruction and human suffering after being hit by six cyclones from January to April this year. Over 34,000 homes were damaged or destroyed and over 440,000 individuals were impacted with 211 official deaths.

The second cyclone (Batsirai) was one of the most destructive to hit Madagascar in over 18 years. It was compounded by another cyclone that came through two weeks later hitting the same area. One big city, Mananjary, suffered 90% destruction from the storms. People were left without homes, schools, and churches. Some communities were completely destroyed.

The Outreach Foundation's partner church in Madagascar, the Church of Jesus Christ in Madagascar (FJKM), has reported major destruction to churches and schools. At this point, over 300 churches have been impacted with 242 destroyed. At least 46 FJKM schools were impacted, with 108 classrooms demolished and 87 left without roofs. Over 8,000 students at FJKM schools are unable to study. Classrooms are slowly being repaired so that students can learn again. Numerous health centers and spiritual care centers were also damaged or destroyed.

At the Ambatolambo spiritual care center in Mananjary, all the buildings were destroyed. The sick and their families stayed under propped-up roofs.



15 people living under structure made from roof

FJKM Secretary-General Rev. Jaona Rakotonindrainy notes “the destruction is so great that we cannot do it alone. To be able to help people recover, to rebuild our schools and churches, we need your prayers and help. Thank you so much to those who have been praying for us. This is a great encouragement.”

The FJKM church has been quick to respond, launching an appeal to its more than 3 million members and 8,000 churches. Responses have been generous with people sharing what they have. However, Madagascar is one of the poorest countries in the world and the poverty level has only increased because of COVID-19. Most people live on less than a dollar a day.

The Malagasy Christians are sharing what they have with those who are in greater need than they are. One church raised funds to rebuild the Ambatolambo spiritual center chapel so that people will have a place to worship and shelter when other cyclones come through. Christians in damaged communities are doing what they can to rebuild.

But the destruction is so massive that Malagasy Christians cannot address it alone. The FJKM church is asking for assistance to be able to rebuild schools and churches and help people rebuild their lives and get children back to school.

It will cost about \$3,000 to rebuild a destroyed church and \$1,500 to rebuild a destroyed classroom. A 50-kilo bag of rice costs \$35 and feeds a family of six for about 20 days. The FJKM church knows that every gift counts and that with five loaves and two fish a multitude was fed. Please consider joining the FJKM church as they seek to rebuild those communities that have suffered great loss by sharing God’s love and hope in tangible ways.

Destroyed home of spiritual care center leaders



WE'RE ON THE ROAD AGAIN

You're invited to travel with The Outreach Foundation to spend time with our global partners – to encourage and be encouraged! Come with us to see how God is at work.

We are richly blessed by our relationships with partners and global workers all over the world. Our international friends encourage and edify with their dedication and witness. Come with us to see what God is doing through these amazing friends all over the world!

Note that full COVID-19 vaccination is now required for all travel with The Outreach Foundation.

Learn more at www.theoutreachfoundation.org/trips



Support The Outreach Foundation's ANNUAL APPEAL

Beginning August 1, 2022.

Look for more information in the coming weeks.

The Outreach Foundation will once again launch our Annual Appeal August 1st. This Annual Appeal enables us to continue our work of engaging donors with the work of Christ in the world. In order to do this, we need a staff, an office, mission consultants, and necessary supplies to do the work that Christ has called us to do in the world. We need people to tell the story of God's work around the world, and this takes financial gifts.

Over the years, our donors have generously responded to this appeal, and we hope that you might consider a generous gift this year.

Thank you in advance for your support.

CONNECTING MISSION LEADERS

A CONFERENCE FOR PEOPLE
PASSIONATE ABOUT MISSION

OCTOBER 13-15 | NASHVILLE, TN

Join us for CML as we discuss
the Future of Frontier Mission.

In today's rapidly changing global environment,
how is the Church called to engage in making the
Good News of Jesus known among the earth's
least-reached people groups?

Learn more and register at connectingmissionleaders.com





OF THE PRESBYTERIAN CHURCH, INC.

381 RIVERSIDE DRIVE, SUITE 465
FRANKLIN, TN 37064

ADDRESS SERVICE REQUESTED



THEOUTREACHFOUNDATION.ORG

We Moved!

The Outreach Foundation
has moved to a new office.

We're in the same building
with a new suite number.

Please note the address change
for your records.

Our new mailing address is:
381 Riverside Drive, Suite 465
Franklin, TN 37064